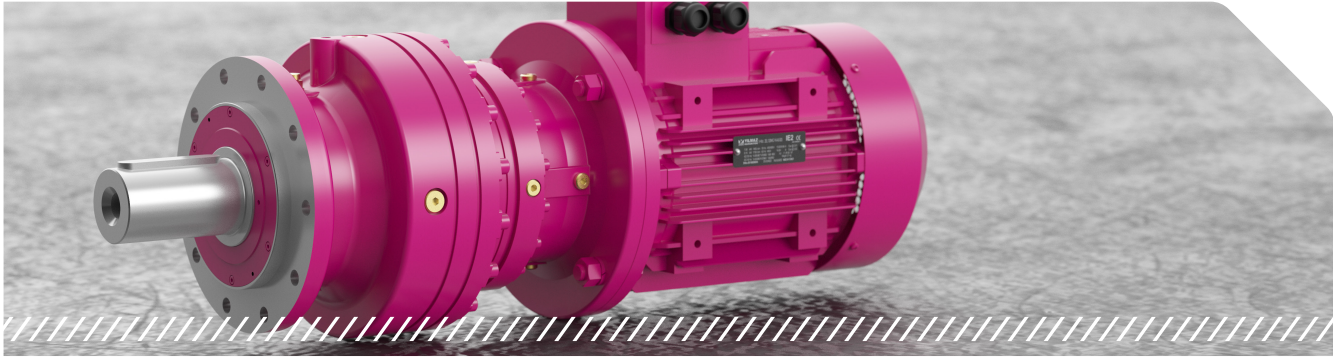




P Series

Planetary, Flange Mounted Gearboxes



▶ Gearboxes that have a modular design and consist of sun, planet and internal gearing, which can be mounted with torque arm or output flange. They are suitable for mobile applications with their high torque capacity and compact design.

Specifications and Advantages

- High torque density with the help of compact housing and bearings
- Bearing solutions for high radial and axial loads
- Output shaft options (Solid shaft, shrink disk, hollow shaft with splines, solid shaft with splines)
- AC and hydromotor flanges
- Perpendicular input shaft options with bevel gear stage
- Worm and bevel gear unit coupling options to decrease output speed
- Different cooling and lubrication options for different working conditions

Options and Accessories

- Servomotor specific connection flanges
- Electromagnetic brakes
- Electromagnetic and hydraulic brakes
- 512 - 1024 pulse encoder application
- External fan cooling option for frequency inverter applications
- Special sealings
- Glass oil level indicator

| | |
|--------------------------|---------------|
| Motor Power Range [kW] | 0,25 - 75 |
| Output Speed Range [rpm] | 0,1 - 410 |
| Torque Range [Nm] | 1000 - 50.000 |

Input Type



PV.L Series
with IEC B5, C26 or M46



PN.L Series
with IEC B5, C26 - M46



PT.L Series
with solid input shaft



P.K Series
with bevel stage input



P + EV Series
box with worm gear



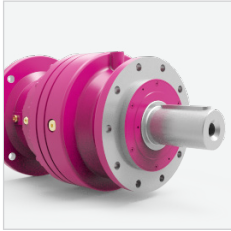
P + KR Series
with bevel gear unit coupled



P Series

Planetary, Flange Mounted Gearboxes

Output Type



P..01
Solid output shaft



P..0K/0L
Hollow output shaft
with splines



P..1K/1L
Solid output shaft
with splines



P..0S
With shrink disk

Please see **Options and Accessories** additional information



Turkey's **largest**
and one of the world's most **innovative** producers of gearboxes.