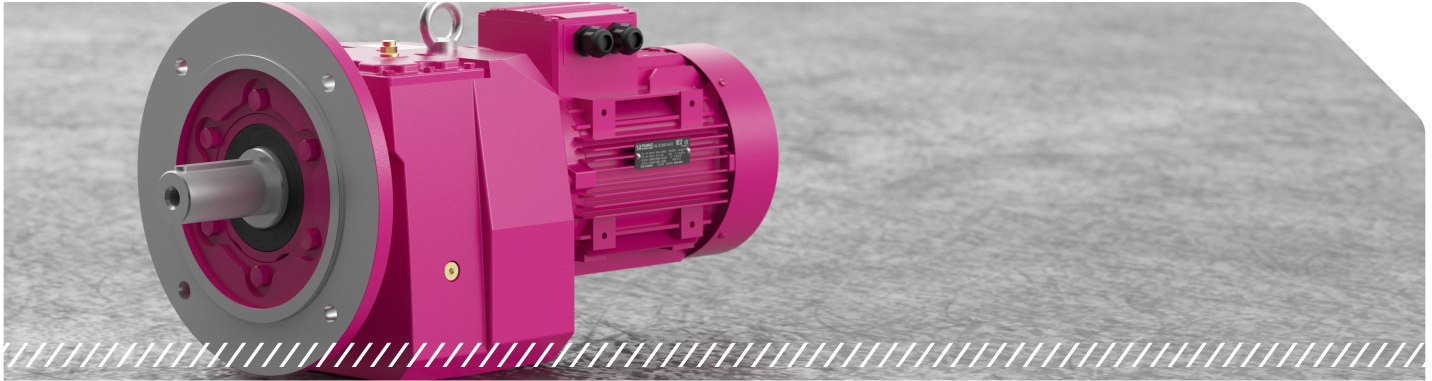




N Series

Flange Mounted Helical Gearboxes



▶ Flange-mounted, helical gear units with solid output shaft, Input and output shafts are parallel to each other.

Specifications and Advantages

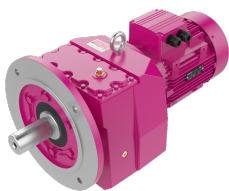
- Monoblock housing design
- Two or three stages can be in same housing
- Reduction can be increased up to six stages with additional housing
- Bearing solutions for high radial and axial loads
- Output shaft options

Options and Accessories

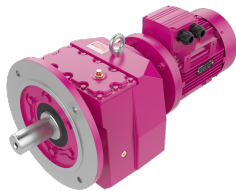
- Output shaft and flange options
- Servomotor-specific connection flanges
- Electromagnetic brake motors (24V/220V/380V)
- Backstop applications
- 512 or 1024 pulse encoder
- External fan cooling option for frequency inverter applications

| | |
|---------------------------------|-------------|
| Motor Power Range [kW] | 0,12 - 160 |
| Output Speed Range [rpm] | 0,1 - 780 |
| Torque Range [Nm] | 50 - 18.000 |

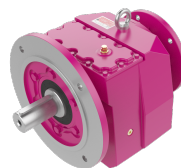
Input Type



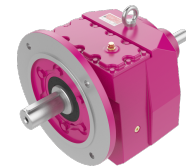
NR Series
Direct motor coupled



NV Series
With IEC B5/B14



NN Series
Flange mounted gear unit



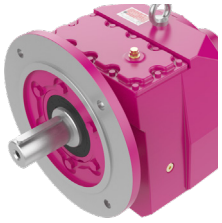
NT Series
With input shaft without motor



N Series

Flange Mounted Helical Gearboxes

Output Type



NRF

With flange and foot mounted

Please see **Options and Accessories** additional information



Turkey's **largest**
and one of the world's most **innovative** producers of gearboxes.