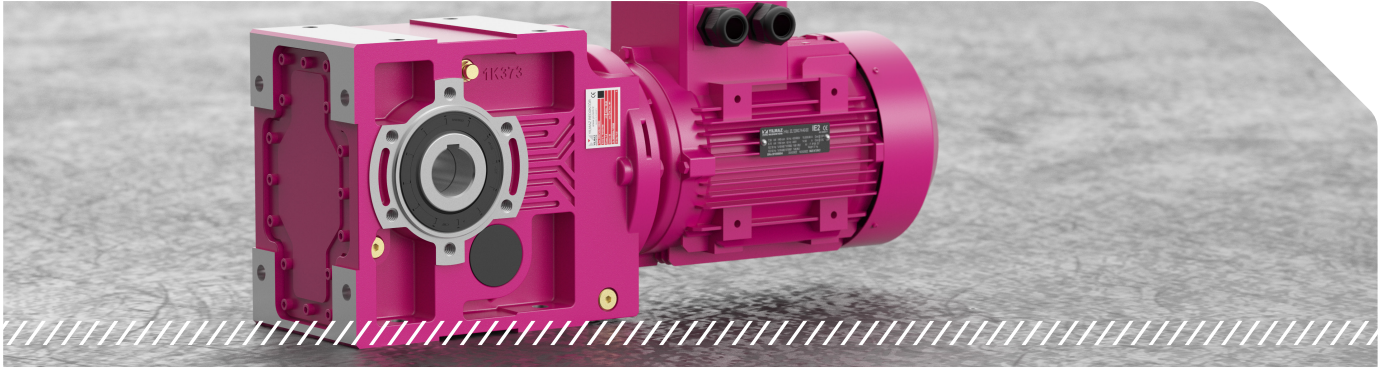




K Series

Bevel - Helical Gearboxes



► Helical bevel gear units, their input and output shafts are perpendicular to each other. They can be mounted to machine from foot, output flange or with torque arm.

Specifications and Advantages

- Monoblock housing design
- Two or three stages can be in same housing
- Reduction can be increased up to six stages with additional housing
- Bearing solutions for high radial and axial loads
- Output shaft options (Hollow shaft, solid shaft, shrink disk, hollow and solid splines)
- Extruder output option for extruder machines (KRE Type)

Options and Accessories

- Output flange and output shaft options
- Servomotor specific connection flanges
- Electromagnetic brake motors (24V/220V/380V)
- Backstop application
- 512-1024 pulse encoder applications
- External fan cooling option for frequency inverter applications

Motor Power Range [kW] 0,12 - 160

Output Speed Range [rpm] 0,1 - 460

Torque Range [Nm] 80 - 20.000

Input Type



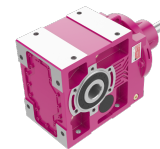
KR Series
Direct motor coupled



KV Series
With IEC B5/B14



KN Series
Gear unit with IEC B5/B14



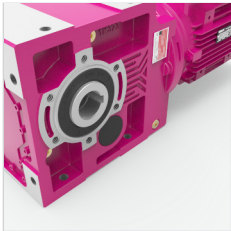
KT Series
With input shaft without motor



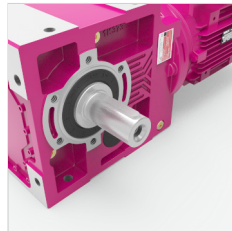
K Series

Bevel - Helical Gearboxes

Output Type



K..00
With hollow shaft



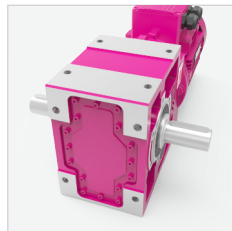
K..01
With solid shaft



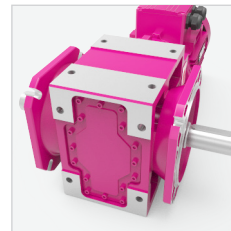
K..02
With solid shaft
and flange



K..03
With hollow shaft
and flange



K..04
With double solid
output shaft



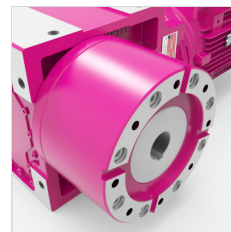
K..05
With double solid
output shaft and flange



K..08
With double hollow
output shaft and flange



K..0S
With hollow shaft
and shrink disk



K..0E
With extruder shaft

Please see **Options and Accessories** additional information



Turkey's **largest**
and one of the world's most **innovative** producers of gearboxes.