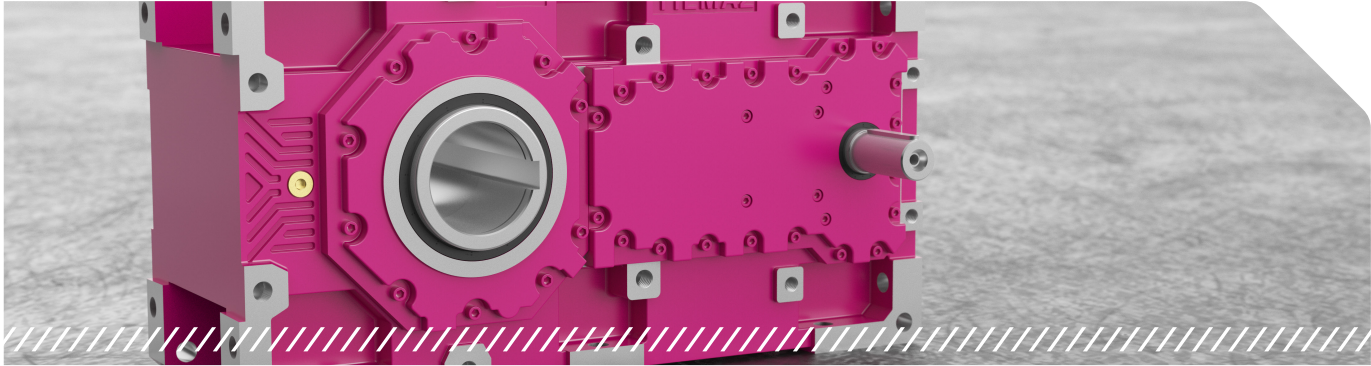




# H Series

## Industrial Helical-Geared Units



▶ Helical industrial type gear units with parallel input and output shaft. They can be mounted to driven machine with foot, output flange or torque arm.

### Specifications and Advantages

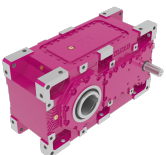
- GGG40 sphero compact housing
- Gears with modifications and tapered rolling bearings
- Mounting from all sides
- Motor mounting with IEC B5 flange
- Output flange options
- Output shaft options (solid shaft, shrink disk, hollow shaft with splines, solid shaft with splines)
- Lubrication options
- Cooling options
- Option for coupling with K series gear units to further increase ratio

### Options and Accessories

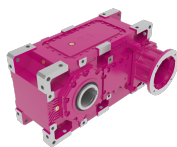
- Mechanical brake option on housing
- Complete solutions including eldro brake, hydraulic coupling and electric motor on steel base frame
- Oil heater, oil flow sensor, oil filter, glass oil level indicator and special sealings
- Torque arm

|                          |                 |
|--------------------------|-----------------|
| <b>Ratio Range</b>       | 5,33 - 420      |
| <b>Torque Range [Nm]</b> | 4.850 - 470.000 |
| <b>Speed Range [rpm]</b> | 0,1 - 263       |

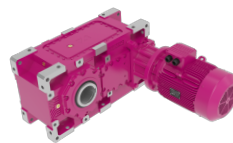
## Input Type



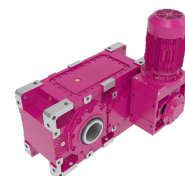
**HT Series**  
With input shaft



**HK Series**  
With IEC B5 input flange



**HK Series**  
Gear unit with motor



**HT + KR Series**  
Gear unit with additional housing



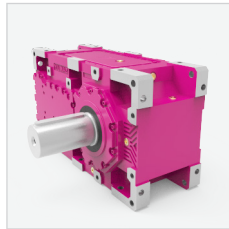
# H Series

## Industrial Helical-Geared Units

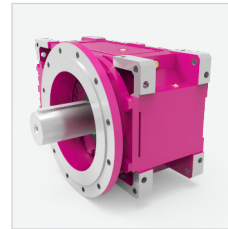
### Output Type



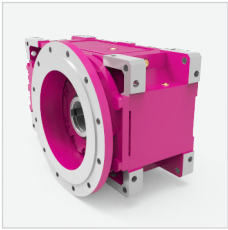
**H..00**  
With hollow shaft



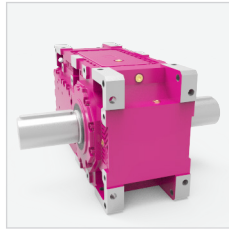
**H..01**  
With solid output shaft



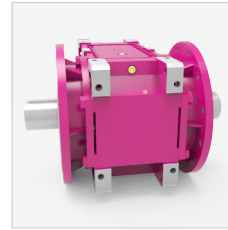
**H..02**  
With solid shaft and flange



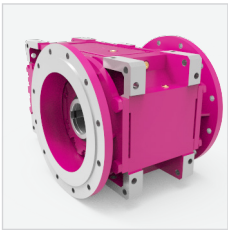
**H..03**  
With hollow shaft and flange



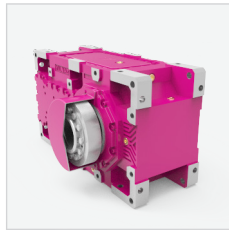
**H..04**  
With double solid output shaft



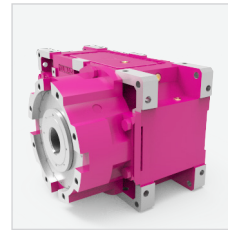
**H..05**  
With double solid output shaft and flange



**H..08**  
With double hollow output shaft and flange



**H..0S**  
With shrink disk



**H..0E**  
With extruder output shaft

Please see **Options and Accessories** additional information



Turkey's **largest**  
and one of the world's most **innovative** producers of gearboxes.